



DLT Engineering



Introduction to DLT Engineering

Technology for modular construction

November 2018

DLT services

- Heavy lifting & load movement systems:
 - Bridge deck erection gantries
 - Heavy duty transporters
 - Heavy duty straddle carriers
 - Jacking towers for refinery/roof/crane construction
 - Strand jack systems
 - Climbing jack & gripper jack systems
 - Skidding systems
 - Synchronised jacking & weighing systems
 - Heavy lift control systems
 - Hydraulic gantries

DLT services

- Heavy lifting site services
 - Site supervision
 - Site training for operation and maintenance
 - Independent site audits
- Construction consultancy services
 - Heavy lifting operations
 - Bridge erection gantries
 - Temporary works
 - Permanent works re-design
 - Independent audits

DLT services

- Heavy lifting site services
 - Site supervision
 - Site training for operation and maintenance
 - Independent site audits
- Construction consultancy services
 - Heavy lifting operations
 - Bridge erection gantries
 - Temporary works
 - Permanent works re-design
 - Independent audits



For the construction & maintenance of

- Major bridges
- Offshore platforms
- Offshore vessels
- Large roofs
- Dams
- Power plants
- Renewable energy structures



Certification :

- ISO 9001 : 2015
- OHSAS 18001 : 2007
- ISO 14001 : 2004



DLT
Engineering

Introduction to DLT Engineering



**DLT
Engineering**



Heavy lifting and load movement systems



**DLT
Engineering**

Bridge deck erection gantries



DLT
Engineering

Heavy duty transporters



DLT
Engineering

Straddle carriers



DLT
Engineering

Jacking tower systems



DLT
Engineering

Synchronous lift & skid systems



DLT
Engineering

Weighing systems, up to 2000 MT per jack



DLT
Engineering

Hydraulic gantries, 200 – 1200 te



**DLT
Engineering**

Strand jacks, 15 te – 1672 te



DLT
Engineering

Pinned climbing & skidding jacks 50 – 1000 te



DLT
Engineering

Hydraulic rams, 50 – 3000 te



DLT
Engineering

Hydraulic power packs 11-500 kW

DL-P40 - Strand Jack Mode - 40 x DL-S185_160t6 per jack

System View Help

Manual Mode

Manual

TOP

Open Top

Close Top

Synchro Extend

Synchro Retract

Open Base

Close Base

Bleed Lower

BASE

Reset Lift Totals

START

11 May 2009 16:44:54

Operating Mode: Select All Auto Lift Auto Lower Manual Select None

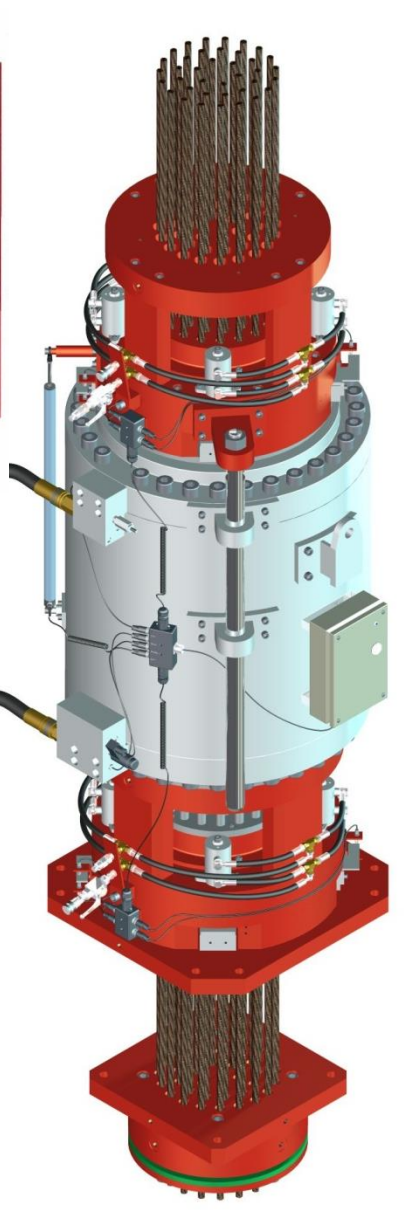
Setup: Calibrate Stroke Set Load... Settings...

Jack Details:

Jack Name:	J100	Stroke(mm):	500.0	SWL(MT):	579.9	20 mA pressure(Bar):	400.0
Jack CAN I.D.:	100	Top dead Zone:	20.0	SWL pressure(Bar):	300.0	Zero Pressure(mA):	4.0
Jack Serial No:	0001	Bottom dead Zone:	20.0	Area ratio:	2.000	Scm full extended(mm):	2610.0
Jack Type:	S111	Extend overrun(mm):	10.0	Retract overrun(mm):	10.0	Scm full retracted(mm):	58.0

Manual Mode Control Panel Data:

Anchor	J100	J101	J102	J103	J104	J105	J106	J107	J108	J109	J110	J111	J112	J113	J114	J115	J116	J117	J118	J119	Jack	
Top Anchor	125%	125%	125%	125%	125%	125%	125%	125%	125%	125%	125%	125%	125%	125%	125%	125%	125%	125%	125%	125%	125%	Load (MT)
Base Anchor	0%	0%	0%	0%	0%	0%	0%	0%	0%	0%	0%	0%	0%	0%	0%	0%	0%	0%	0%	0%	0%	Monitor (MT)
Top Anchor	100%	100%	100%	100%	100%	100%	100%	100%	100%	100%	100%	100%	100%	100%	100%	100%	100%	100%	100%	100%	100%	Stroke (mm)
Base Anchor	0%	0%	0%	0%	0%	0%	0%	0%	0%	0%	0%	0%	0%	0%	0%	0%	0%	0%	0%	0%	0%	Lift (mm)
Top Anchor	125%	125%	125%	125%	125%	125%	125%	125%	125%	125%	125%	125%	125%	125%	125%	125%	125%	125%	125%	125%	125%	Jack
Base Anchor	0%	0%	0%	0%	0%	0%	0%	0%	0%	0%	0%	0%	0%	0%	0%	0%	0%	0%	0%	0%	0%	Load (MT)
Top Anchor	100%	100%	100%	100%	100%	100%	100%	100%	100%	100%	100%	100%	100%	100%	100%	100%	100%	100%	100%	100%	100%	Monitor (MT)
Base Anchor	0%	0%	0%	0%	0%	0%	0%	0%	0%	0%	0%	0%	0%	0%	0%	0%	0%	0%	0%	0%	0%	Stroke (mm)
Top Anchor	100%	100%	100%	100%	100%	100%	100%	100%	100%	100%	100%	100%	100%	100%	100%	100%	100%	100%	100%	100%	100%	Lift (mm)
Base Anchor	0%	0%	0%	0%	0%	0%	0%	0%	0%	0%	0%	0%	0%	0%	0%	0%	0%	0%	0%	0%	0%	Jack
Top Anchor	100%	100%	100%	100%	100%	100%	100%	100%	100%	100%	100%	100%	100%	100%	100%	100%	100%	100%	100%	100%	100%	Load (MT)
Base Anchor	0%	0%	0%	0%	0%	0%	0%	0%	0%	0%	0%	0%	0%	0%	0%	0%	0%	0%	0%	0%	0%	Monitor (MT)
Top Anchor	100%	100%	100%	100%	100%	100%	100%	100%	100%	100%	100%	100%	100%	100%	100%	100%	100%	100%	100%	100%	100%	Stroke (mm)
Base Anchor	0%	0%	0%	0%	0%	0%	0%	0%	0%	0%	0%	0%	0%	0%	0%	0%	0%	0%	0%	0%	0%	Lift (mm)



DLT
Engineering

Heavy lift control systems



**DLT
Engineering**



Reference Projects

for detailed information on each project visit
www.dormanlongtechnology.com



DLT
Engineering

2 x 870 te gantry for Temburong Bridge, Brunei



DLT
Engineering

Doha Link gantry, 60m 1700 te, Kuwait



DLT
Engineering

DL-SE500/30 gantry, Riyadh Metro, KSA



DLT
Engineering

DL-SE1000/35 gantry, Honam HSR, Korea



DLT
Engineering

Forth cable stayed bridge deck gantries, UK



DLT
Engineering

Rio Negro bridge deck erection gantries, Brazil



DLT
Engineering

Sutong bridge deck erection gantries, China



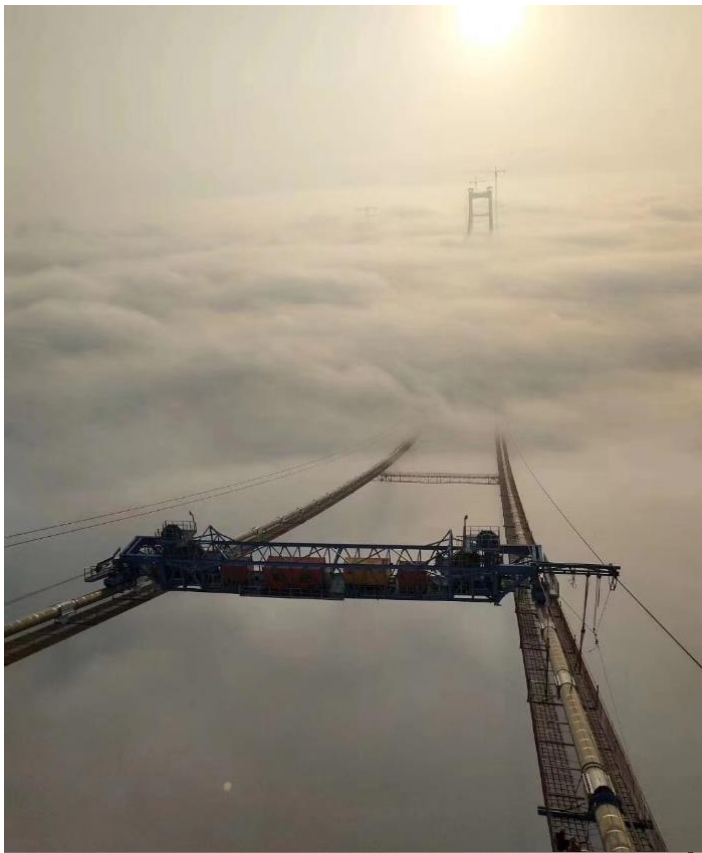
DLT
Engineering

Orinoco river second crossing, Venezuela



DLT
Engineering

CLKTM viaduct segment gantry, Hong Kong



DLT
Engineering

Humen 2nd Bridge, China



DLT
Engineering

Runyang Suspension bridge, China



DLT
Engineering

Carquinez Suspension Bridge, San Francisco



**DLT
Engineering**

5,000 te bridge launch, UK



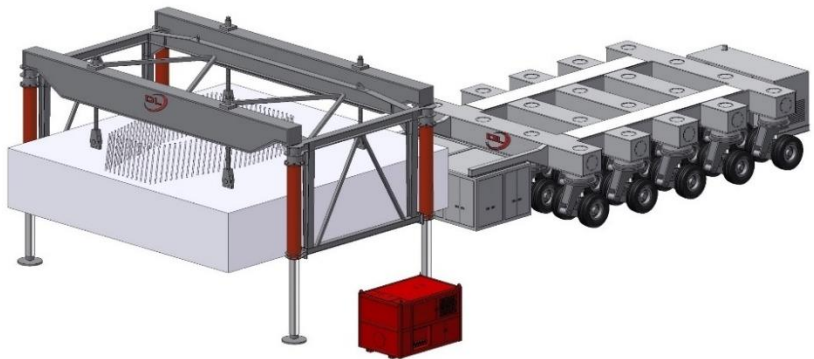
DLT
Engineering

Doha Link straddle carrier, 2 x 850 te, Kuwait



DLT
Engineering

2 x 260 te straddle carriers, Riyadh Metro, KSA



DLT
Engineering

New Champlain Bridge, Canada. Transporter



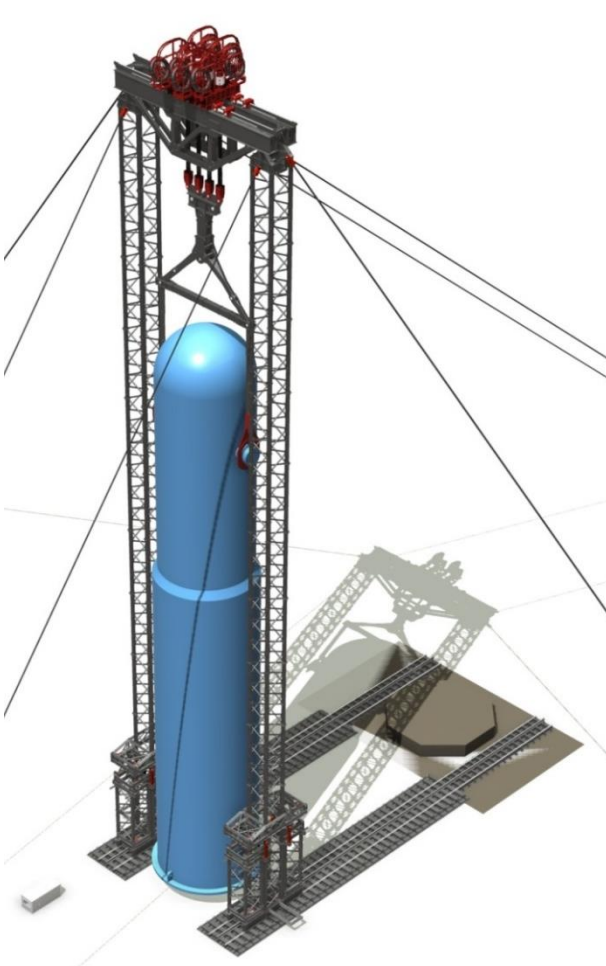
DLT
Engineering

DL-TC500/30 transporter, Riyadh Metro, KSA



DLT
Engineering

DL-TS3600 jacking tower system, China



DLT
Engineering

MYQ5000 jacking tower system, China



DLT
Engineering

2500 te modular jacking tower system, China



DLT
Engineering

1600 te modular jacking tower system, Taiwan



DLT
Engineering

Goliath crane erection, Gunsan, kore



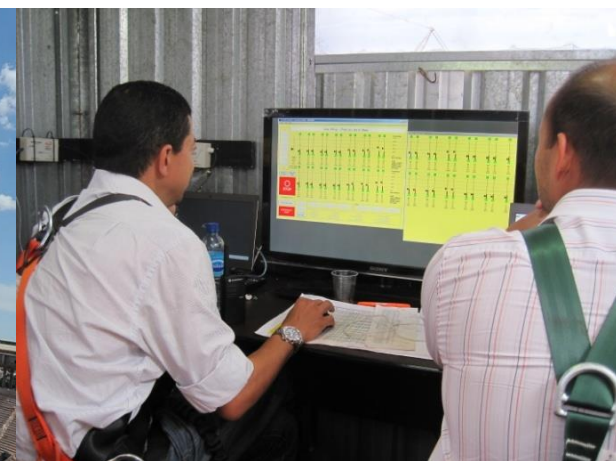
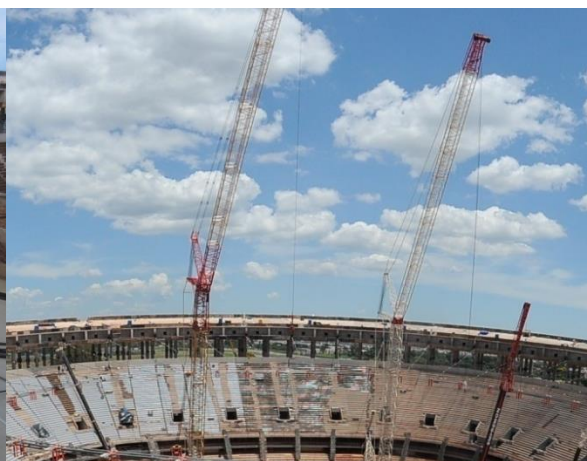
DLT
Engineering

HAECO Hanger 3A roof lift, HK



DLT
Engineering

Wembley national stadium roof, UK



**DLT
Engineering**

48 point stadium cable net roof lift, Brazil



DLT
Engineering

Heathrow new terminal 5 building, UK



DLT
Engineering

Blast furnace installation, Taiwan



DLT
Engineering

20,000 tonne SWL float over system



DLT
Engineering

Transformer platform installation, North Sea



DLT
Engineering

MAARI jacket incremental lifting, Malaysia



**DLT
Engineering**

Load outs using DLT strand jacks, to 14,000 te



**DLT
Engineering**

Thruster replacement using DLT strand jacks



DLT
Engineering

2 x 1000 te Jacket skidding system



09/27/2010



DLT
Engineering

Olmstead dam project, USA



DLT
Engineering

ShiBanPo bridge, China



DLT
Engineering

Sheik Khalifa Bin Salman bridge, Bahrain



**DLT
Engineering**



End of presentation